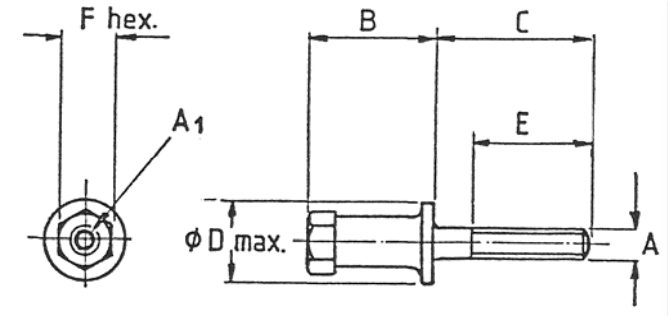


DEI CODE NO.	WB PART NO.	THREAD SIZE See Note		B	C	D max.	E	F	MATERIAL See Note			
		A	A <sub>1</sub>									
36765	-303-0	WB/1147/29	4 BA	.395(10.03)	.725(18.42)	.380 (9.65)	.500 (12.70)	.245 (6.22)	Aluminium Alloy			
	-304-0	WB/1114/63		.625(15.88)								
	-502-0	WB/1114/28		.575(14.61)	.725(18.42)							
	-504-0	WB/1114/62		.925(23.50)								
	-505-0	WB/1114/B/28/L		.528(13.41)	1.247(31.67)							
	-506-0	WB/1114/B/28		.575(14.61)	.725(18.42)				Stainless Steel			
36766	-305-0	WB/UN/1154/69	6-32 UNC	.365(9.27)	.735(18.67)	.317(8.05)	.530(13.46)	.245(6.22)		Aluminium Alloy		
	-304-0	WB/UN/1472		.475(12.07)	.380(9.65)	.267(6.78)						
	-322-0	WB/UN/2990		.615(15.62)	.300(7.62)							
	-308-0	WB/UN/1114/63		.625(15.88)	.380(9.65)							
	-314-0	WB/UN/1629		.725(18.42)	.300(7.62)							
	-312-0	WB/UN/1114/28		.380(9.65)	.530(13.46)							
	-325-0	WB/UN/2991		.795(20.19)	.300(7.65)							
	-318-0	WB/UN/1114/62		.925(23.50)								
	-307-0	WB/UN/1147/B/29		.395(10.03)	.725(18.42)	Stainless Steel						
	-310-0	WB/UN/1593		.530(13.46)	.720(18.29)		.380(9.65)		.500(12.70)			
	-319-0	WB/UN/1114/B/28/L		.528(13.41)	1.247(31.67)							
	-315-0	WB/UN/1114/B/28		.575(14.61)	.725(18.42)	.530(13.46)						
	-316-0	WB/UN/1301		10-32 UNF	6.32 UNC	.668(16.97)	.780(19.81)		.405(10.29)	.500(12.70)	.310(7.87)	Aluminium Alloy
	-329-0	WB/UN/3037										Stainless Steel
	-320-0	WB/UN/1298	¼-28 UNF	6-32 UNC	1.018(25.86)	.780(19.81)	.505(12.83)	.530(13.46)	.310(7.87)	Aluminium Alloy		
-321-0	WB/UN/1298/B	Stainless Steel										
36767	-001-0	----	M3X0,50	6-32 UNC	.570(14.47)	.730(18.54)	.300(7.62)	.530(13.46)	.245(6.22)	Stainless Steel		
	-003-0	----			.631(16.03)	.551(14.00)						



**NOTES:**

- THREAD TOLERANCES**  
B A Threads to BS93.  
 External and Internal class: Normal  
  
Unified Threads to BS1580  
 External class 2A  
 Internal class 2B  
  
Metric Threads to BS3643  
 External class 2g
- FINISH**  
 On Aluminium Alloy: Anodised to DEF 151 Type 2 Chromic  
  
 On Stainless Steel: None
- ORDERING**  
 Fixing Pillars should be ordered by the code number but WB part number may be used where applicable.
- All dimensions are nominal unless otherwise stated
- For 'used on' details refer to sheet 2.

FIXING PILLAR		Used with Terminal Block Outline Drawing																												
DEI CODE NO.	WB PART NO.	33462/FD1154		72141/S1110	72141/S1114	72143/S1148	72143/S1169	72144/D1110	72144/D1114	72146/D1169	72441/S1110	72441/S1148	72441/S1736	72444/D1110	72444/D1736	72541/S1114	72541/S1146	72541/S1147	72542/S1173	72542/S1182	72543/S1169	72544/D1114	72544/D1146	72546/D1169	72743/S1185	72841/S1161	72841/S1162	72841/S1163		
36765	-303-0	WB/1147/29				X																								
	-304-0	WB/1114/63		X	X		X	X	X	X																				
	-502-0	WB/1114/28		X	X		X	X	X	X																				
	-504-0	WB/1114/62		X	X		X	X	X	X																				
	-505-0	WB/1114/B/28/L		X	X		X	X	X	X																				
	-506-0	WB/1114/B/28		X	X		X	X	X	X																				
36766	-304-0	WB/UN/1472									X			X		X	X		X		X	X	X	X	X	X	X			
	-305-0	WB/UN/1154/69	X																											
	-307-0	WB/UN/1147/B/29										X						X		X										
	-308-0	WB/UN/1114/63								X				X		X	X		X		X	X	X	X	X	X	X			
	-310-0	WB/UN/1593								X				X		X	X		X		X	X	X	X	X	X	X			
	-312-0	WB/UN/1114/28								X				X		X	X		X		X	X	X	X	X	X	X			
	-314-0	WB/UN/1629											X		X															
	-315-0	WB/UN/1114/B/28								X				X		X	X		X		X	X	X	X	X	X	X			
	-316-0	WB/UN/1301																											X	
	-318-0	WB/UN/1114/62									X				X		X	X		X		X	X	X	X	X	X	X		
	-319-0	WB/UN/1114/B/28L								X				X		X	X		X		X	X	X	X	X	X	X			
	-320-0	WB/UN/1298																												X
	-321-0	WB/UN/1298/B																												X
	-322-0	WB/UN/2990														X														
	-325-0	WB/UN/2991												X		X														
-329-0	WB/UN/3037												X															X		
36767	-001-0												X		X															
	-003-0												X		X															

